



Forming Oil Cleaning System

Equipment Specifications

- MAB-205 Centrifuge
- 2.5 GPM Process Flow Rate
- 12kW Heater w/
Programmable Temperature
Controller
- Electrical Controls, w/ "On"
indicator and alarm lights
- 440V-3Ph-60Hz Power
- Pressure Gauge
- Sample Port
- Fork lift Pockets
- Operating Manual w/ Spare
Parts Lists

Safety Features

- Disconnect Switch

The Forming Oil Cleaning System consists of a high speed centrifuge, process heater, pre-filter, and remote feed pump. Contaminated oil directly effects the quality of the weld wire, and increases down time and maintenance costs. The Forming Oil Cleaning System extends the life of the oil and the equipment. It also reduces the transportation of both new and used oil. The system runs on 440 volt, 20 amp power.



INDUSTRIAL FLUID SYSTEMS

22200 Ryan Road
Warren, MI 48091

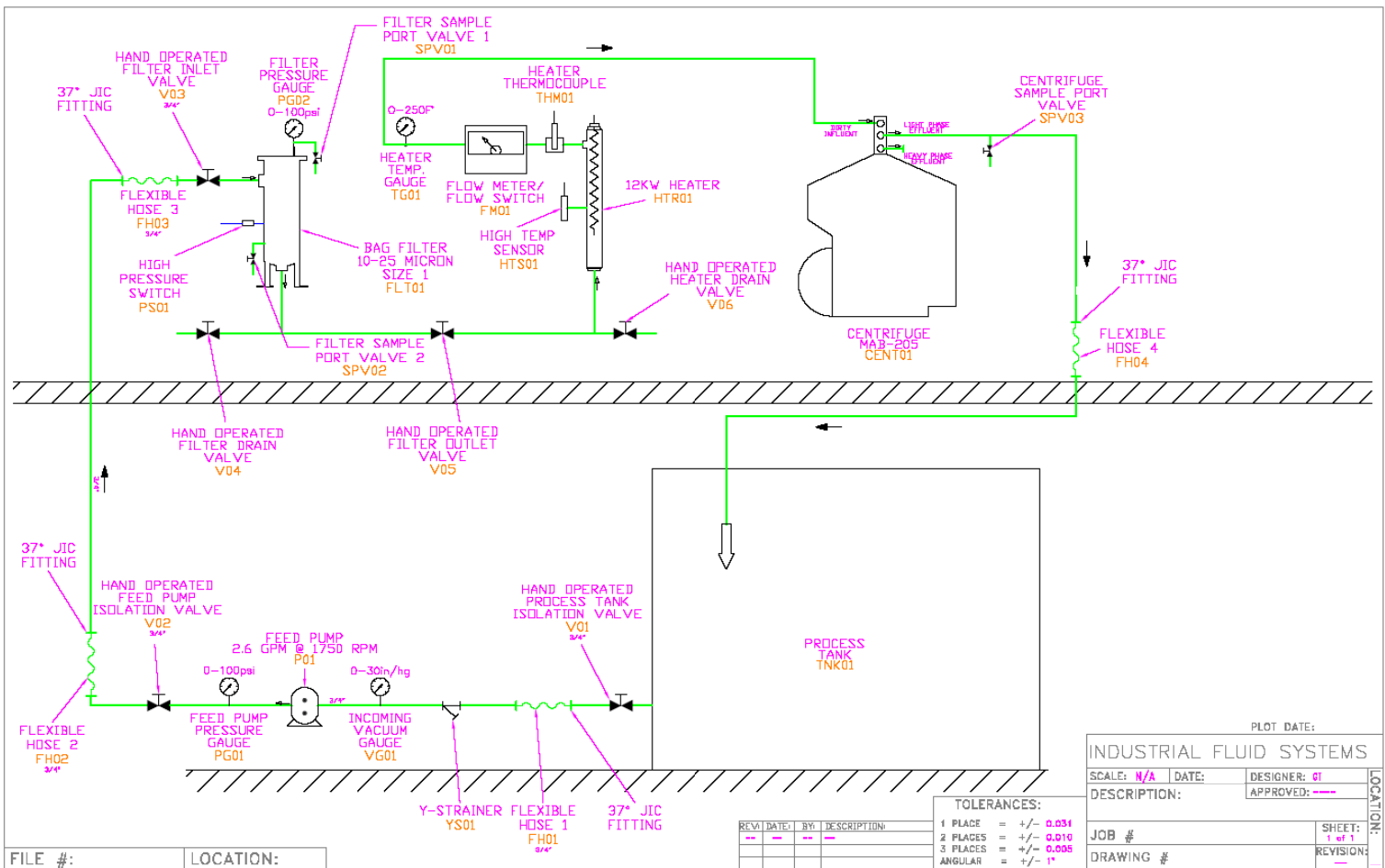
Phone: 800-343-8106

Fax: 586-754-8284

www.industrialfluidsystems.com



Forming Oil Cleaning System - Flow Diagram



PLOT DATE:		INDUSTRIAL FLUID SYSTEMS	
SCALE: N/A	DATE:	DESIGNER: 01	LOCATION:
DESCRIPTION:		APPROVED: ---	
JOB #	SHEET: 1 of 1		
DRAWING #	REVISION:		

TOLERANCES:		
1 PLACE	=	+/- 0.031
2 PLACES	=	+/- 0.010
3 PLACES	=	+/- 0.008
ANGULAR	=	+/- 1°

REV	DATE	BY	DESCRIPTION

System Operation

The dirty fluid is drawn from the customer's dirty fluid holding tank with the feed pump. The dirty fluid inlet flow rate is adjusted using a bypass valve. The dirty fluid is filtered, heated, and then feed into the centrifuge. Inside the centrifuge bowl, the solid particles are pulled to the periphery or outside of the bowl along with the water. Clean oil is forced to the inside of the bowl and discharged out the clean oil port back to the holding tank.